

Mc Gold™

# Mc Gold International LLC

*Industrial Solution Provider*

**MULTI PRODUCTS**

**Residential**

**Commercial**

**Industrial**



# MULTI PRODUCTS INDEX

## INTERACTIVE TOUCH SCREEN LED

(Now Available: Vibe Board, 65 INCH, 75 INCH, 86 INCH)

## GENERATORS

(Ready Stock and OEM Capacity Available 10 KVA to 1000 KVA )

## ELEVATORS

(Passenger Elevator, Home Elevator, Hospital Elevator, Car Elevator, Observation Elevator, Freight Elevator, Escalator Elevator, Moving Walk Way)

## FIRE FIGHTING EQUIPMENTS

(Fire extinguishers, Fire Alarm System, Smoke Detector, Fire Suppression System, Fire Hydrant System, Fire Buckets, Fire Door, Emergency and Safety Sign, Fire Fighting Pumps)

## TRUN KEY BASIS PROJECTS

(Complete Industrial Solution like: Installation & Commissioning )

## SOLAR

(All Solution Available Now: Residential, Commercial, Industrial)



# INTERACTIVE TOUCH SCREEN LED

Integrating functions such as LED display, Electronic white board, PC, Microphone, Audio and more.



Dual System

Android 8.0/Windows 10



Audio

PC

Projector

Information

Android pen

HDMI

VGA

HDMI

USB

ARM A73 (Android)

I5/I7 (Windows)



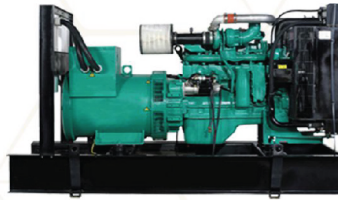
**EMPOWERING POSSIBILITIES**  
**UNSTOPPABLE ENERGY, ANYTIME,**  
**ANYWHERE**



## Mc Gold Partners



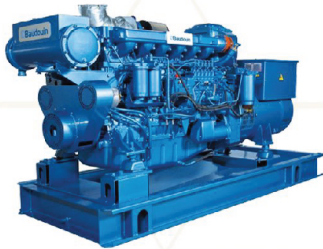
Perkins



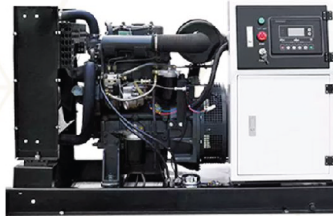
Cummins



Lister Petter



Baudouin



YangDong



Kubota



### GENUINE SPARE PARTS

We Stock a Complete range of high quality spare parts for diesel generators. Our offering includes electrical and mechanical, engines and alternators to serve your immediate overhauling and maintenance needs.



### CANOPY

Canopy is a home for a generator that protects Diesel Generator Set components from outside weather. It is a fixed cover for Diesel Generator Set, especially for shelter or protection. RM Services ranks among the top 10 best generator canopy manufacturer in Karachi, Pakistan.



### FUEL TANKS

We offer customize fuel tank in Pakistan price for diesel generator with the capacity from 50 liter to 1000 liter and up. RM Services, being an ISO certified company generator is best manufacturer and supplier of fuel tank in Pakistan price. Our fuel tank is well tested according to the EU standard, so we stand as the company of fuel efficient diesel generator too which makes RM Services the best diesel generator brand in Karachi.



### ATS PANEL

Are you looking for ATS Panel and stuck in decision-making? As RM Services serves as the best diesel generator supplier in Pakistan, the company also manufactures very high-quality, best and efficient ATS panel (Automatic Transfer Switch Panel) that ensures our customer satisfaction.



### GENERATOR TROLLEY

Welcome to RM Services, where we specialize in the manufacturing of high-quality trolleys designed specifically for the movement and transportation of generators. With a deep understanding of the challenges associated with generator mobility, we have dedicated ourselves to crafting innovative solutions that make generator transportation easier, safer, and more efficient.



### SYNCHRONIZATION

Being the Leading Generator Manufacturers, RM Services has a Legacy of High-Quality Synchronization Panel manufacturer company in Karachi Pakistan. RM Services serves as the best optimal Synchronization Panel manufacturer company that meets the requirements of your Power System. RM Services company generator is best in customer management services and best diesel generator supplier in Pakistan.

### Generating Set Rating: 9 up to 2500 KVA

GENERATING SETS	KVA RATING		KW	
	PRIME	STANDBY	PRIME	PRIME
RMS-9	9.0	10.0	7.2	8.0
RMS-12.5	12.5	14.0	10.0	11.2
RMS-15	15.0	16.5	12.0	13.2
RMS-20	20.0	22.0	16.0	17.6
RMS-30	30.0	33.0	24.0	26.4
RMS-45	45.0	50.0	36.0	40.0
RMS-60	60.0	66.0	48.0	52.8
RMS-80	80.0	88.0	64.0	70.4
RMS-100	100.0	110.0	80.0	88.0
RMS-135	135.0	150.0	108.0	120.0
RMS-150	150.0	165.0	120.0	132.0
RMS-180	180.0	200.0	144.0	160.0
RMS-200	200.0	220.0	160.0	176.0
RMS-230	230.0	253.0	184.0	202.4
RMS-250	250.0	275.0	200.0	220.0
RMS-275	275.0	303.0	220.0	242.0
RMS-300	300.0	330.0	240.0	264.0
RMS-350	350.0	400.0	280.0	320.0
RMS-400	400.0	450.0	320.0	360.0
RMS-450	455.0	500.0	364.0	400.0
RMS-500	500.0	550.0	400.0	440.0
RMS-600	600.0	660.0	480.0	528.0
RMS-650	650.0	700.0	520.0	560.0
RMS-700	706.0	780.0	564.0	624.0
RMS-750	750.0	825.0	600.0	660.0
RMS-770	770.0	850.0	616.0	680.0
RMS-800	800.0	880.0	640.0	704.0
RMS-1000	1000.0	1100.0	800.0	880.0
RMS-1125	1125.0	1250.0	900.0	1000.0
RMS-1250	1250.0	1375.0	1000.0	1100.0
RMS-1350	1350.0	1485.0	1080.0	1188.0
RMS-1500	1500.0	1650.0	1200.0	1320.0
RMS-1700	1710.0	1880.0	1368.0	1504.0
RMS-2000	2000.0	2200.0	1600.0	1760.0
RMS-2250	2250.0	2500.0	1800.0	2000.0



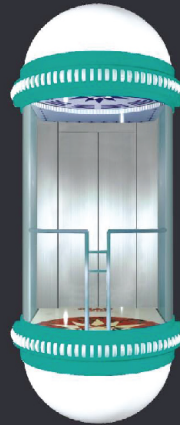
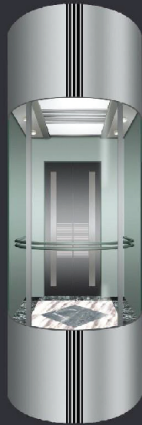
# SANYO ELEVATORS AND ESCALATORS

(OEM & JV CO BRANDING PARTNER)

SANYO ELEVATORS AND ESCALATORS



# CABINS OF PANORAMIC ELEVATORS



## SEE-CP3020 ▲

**Upper and lower guard:**  
Semicircle acrylic with metal cover and stainless steel board

**Glass walls:**  
Three glue glass of safety clamp

**Decorative ceiling:**  
Painted steel sheet with acrylic top plate and decorative lighting

**Cabin walls:**  
Mirror finish, hairline finish, etching finish, or carve in golden

**Handrail:**  
Stainless steel tube

**Flooring:**  
PVC

## SEE-CP3021 ▲

**Upper and lower guard:**  
Steel plate baked enamel

**Glass walls:**  
160 round laminated safety glass (3PCS), glass thickness 6+6

**Decorative ceiling:**  
Steel plate baked enamel framework, acrylic arch top plate

**Cabin walls:**  
Stainless steel hairline board

**Handrail:**  
Φ25 Pair tube for stainless steel

**Flooring:**  
PVC

## SEE-CP3022 ▲

**Upper and lower guard:**  
Steel plate baked enamel

**Glass walls:**  
Laminated safety glass(3PCS), thickness 6+6

**Decorative ceiling:**  
Mirror stainless steel framework, mixed illumination of the tubular light and multi-level light-emitting plate

**Cabin walls:**  
Stainless steel hairline board

**Handrail:**  
Φ25 Pair tube for stainless steel

**Flooring:**  
PVC

## SEE-CP3023 ▲

**Upper and lower guard:**  
Painted steel with acrylic lighting decoration

**Glass walls:**  
Laminated safety glass

**Decorative ceiling:**  
Painted finish with acrylic top plate and decorative lighting

**Cabin walls:**  
Hairline stainless steel

**Handrail:**  
Stainless steel tube

**Flooring:**  
PVC

## SEE-CP3025 ▲

**Upper and lower guard:**  
Painted steel with ti-plated steel board

**Glass walls:**  
Laminated safety glass

**Decorative ceiling:**  
Multi-layer glass board with decorative lighting

**Cabin walls:**  
Hairline stainless steel

**Handrail:**  
Stainless steel tube

**Flooring:**  
PVC

## SEE-CP3033 ▲

**Upper and lower guard:**  
Titanium, acrylic round cover

**Glass walls:**  
Laminated safety glass

**Decorative ceiling:**  
Bake painted steel plate with acrylic lighting decoration

**Cabin walls:**  
Titanium etching, titanium mirror

**Handrail:**  
Titanium stainless steel tube

**Flooring:**  
PVC

# CABINS OF PANORAMIC ELEVATORS



## SEE-CP3026 ▲

**Upper and lower guard:**  
Painted frame

**Glass walls:**  
Laminated safety glass

**Decorative ceiling:**  
Multi-layer glass board with decorative lighting

**Cabin walls:**  
Laminated safety glass

**Handrail:**  
Flat stainless steel

**Flooring:**  
PVC

## SEE-CP3027 ▲

**Upper and lower guard:**  
Steel plate baked enamel, lighting decoration

**Glass walls:**  
Safety laminated glass, thickness 6+6

**Decorative ceiling:**  
Steel plate baked enamel framework, acrylic top plate, lighting decoration on both sides

**Cabin walls:**  
Stainless steel hairline board

**Handrail:**  
Φ25 Pair tube for stainless steel

**Flooring:**  
PVC

## SEE-CP3028 ▲

**Upper and lower guard:**  
Semicircle stainless steel with acrylic lighting decoration

**Glass walls:**  
Laminated safety glass

**Decorative ceiling:**  
Painted steel with decorative lighting

**Cabin walls:**  
A combination of mirror and hairline stainless steel with etching finishes

**Handrail:**  
Stainless steel tube

**Flooring:**  
PVC

## SEE-CP3029 ▲

**Upper and lower guard:**  
Semicircle stainless steel with acrylic lighting decoration

**Glass walls:**  
Laminated safety glass

**Decorative ceiling:**  
Painted steel with decorative lighting

**Cabin walls:**  
A combination of mirror and hairline stainless steel with etching finishes

**Handrail:**  
Stainless steel tube

**Flooring:**  
PVC

## SEE-CP3030 ▲

**Upper and lower guard:**  
Steel plate baked enamel

**Glass walls:**  
Safety laminated glass(3PCS), thickness 6+6

**Decorative ceiling:**  
Steel plate baked enamel framework, acrylic top plate

**Cabin walls:**  
Stainless steel hairline board

**Handrail:**  
Φ38 stainless steel single pipe floor type

**Flooring:**  
PVC

## **FIRE FIGHTING EQUIPMENT**

A fire fighting equipment is important to know for fighting the fire when a fire outbreaks. Disasters may happen, natural disasters like earthquakes or floods cannot be controlled by human beings but some disasters can be controlled by humans.

Fire also belongs to such disasters which can be controlled with the help of fire fighting equipment.

There is a long list of fire fighting equipment for extinguishing the fire. The purpose of designing different firefighting equipment is to fight the different classes of fire.

The fire can outbreak due to different materials and it spreads due to the burning of different materials like paper, cloth, oil, etc. The fire is divided into different classes depending upon the material which is burning during the fire.

Different places contain different assets and materials therefore the classes of fire differ. So, knowing that, which class of fire will be extinguished with which fire fighting equipment is compulsory

Given below is a list of fire fighting equipment in Pakistan which are which is available in 2022 at Adams Fire Tech:

### **FIRE FIGHTING EQUIPMENTS:**

Fire Extinguishers, Fire Alarm Systems, Smoke Detector, Fire Suppression System

Fire Hydrant System, Fire Buckets, Fire Doors, Emergency and Safety Sign

Fire First Aid Kits, Fire Suit, Fire, Fire and Welding Blankets, Flamezorb, Fire Sprinklers

Heat Detector, Fire Fighting Vehicle, Fire Cabinet, Fire Ball, Firefighter gloves, Fire Pump.



## **ADDITIONAL SERVICES UNDER ONE ROOF :**

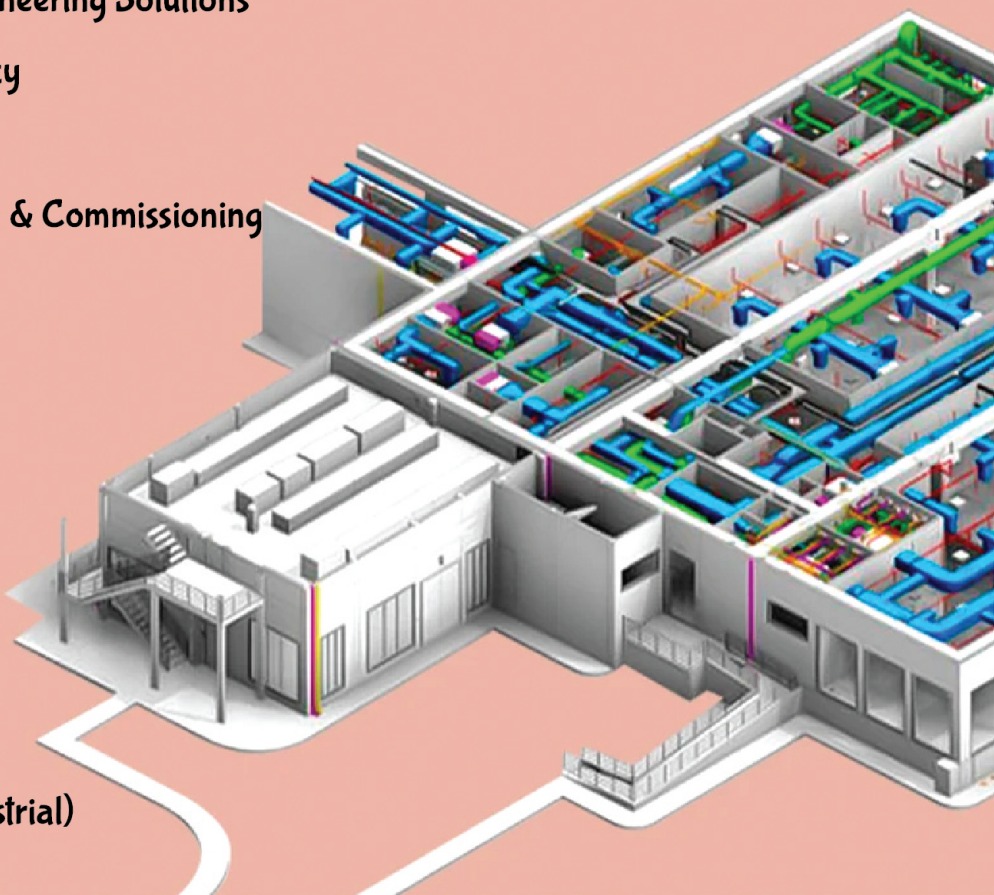
- We Providing All Kinds of Fire Figthing Solutions
- All Kinds of Fire Figthing Project Designing
- All Kinds of Fire Figthing Project Consultancy
- All Kinds of Fire Figthing Project Installation & Commissioning

## **TRUN KEY BASIS PROJECTS**

- We Providing All Kinds of Engineering Solutions
- All Kinds of Project Consultancy
- All Kinds of Project Designing
- All Kinds of Project Installation & Commissioning
- All Kinds of MEP Works



(Residential, Commercial, Industrial)





## CONVERT ON SOLAR & SAFE ENVIRONMENT

- We Providing All Kinds of Solar Solutions
- All Kinds of Solar Project Consultancy
- All Kinds of Solar Project Designing
- All Kinds of Solar Project Installation & Commissioning
- All Kinds of Solar Services Under one Roof



**SolarEnergy**

**We Are Authorized OEM Partners**



**We Are Authorized Members Of**



**Certified Product Providers**



📍 **Head Office Suit # C-103, Grey Noor Tower,  
Gulzar-e-hijri, Sector-29, Scheme 33 Karachi.**  
 📞 **0300-2905970 | 0301-2110078 | 021-34647861**  
 ✉ **info@mcgoldint.com**  
 ✉ **info@mcgoldusa.com**  
 🌐 **www.mcgoldint.com**

